



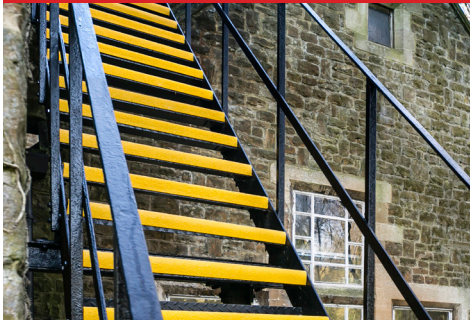
FIBREGRID

SlipGrip® Installation Guide

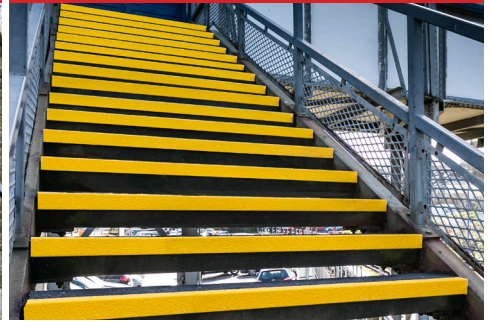
SlipGrip® Sprint GRP



SlipGrip® Standard GRP



SlipGrip® Heavy Duty GRP



SlipGrip® Safety Glow GRP



SlipGrip® Extreme Core GRP



SlipGrip® Precision



Handling & Storage

Safe handling practices should always be employed and the appropriate Personal Protection Equipment is to be worn. Store the covers flat and upside down.



Personal Protection Equipment

It is recommended that the following Personal Protection Equipment is worn for installation of SlipGrip® GRP sheet and stair treads and further protective measures may be necessary but this will depend on the installation environment:

Bonding

- Eye Goggles
- Protective Gloves
- Safety Boots

Cutting & Mechanical Fixing

- Ear Defenders
- Eye Goggles
- Dust Mask (available from FibreGrid)
- Protective Gloves
- Safety Boots



Measuring

Width

Measure from left to right across the tread substrate. Then deduct 5mm (2.5mm either side) to ensure they easily fit and to allow for any expansion.

Depth

Measure from the front (nosing) to the back of the tread substrate. Then deduct 5 mm. E.g. 300mm measured depth minus 5mm = 295mm.



Cutting

SlipGrip® anti slip sheets and stair treads can be cut to size using orbital cutting equipment with a diamond blade. Cutting should be carried out externally or where there is dust extraction or suitable ventilation and the appropriate protective equipment detailed above should be worn. A jigsaw can be used for trimming or for occasions where only a small amount of cutting is required.

Cut to Size service

FibreGrid offers a free cut to size service for all SlipGrip® products except SlipGrip® Precision. When you place your order, advise the technical advisor that you intend to install the product yourself and they will tailor the order to meet your requirements.



Preparation

Any damage or undulations to the substrate should be remedied to ensure that the stair tread or flat sheet will be on a reasonably flat and even surface. SlipGrip® Sprint sheets can be applied to uneven surfaces. If using an adhesive, the substrate must be clean and dry and free from oils, grease, dust and any loose particles. The underside of the sheet or stair tread must also be clean and dry. Where the substrate is contaminated (e.g. by oil), mechanical fixing is essential. Prior to applying any adhesive, it is advisable to carry out a dry-fit first to ensure a suitable fit.

FibreGrid recommends a double fixing method for installing GRP anti slip sheets and stair treads, consisting of a high strength adhesive or double sided tape such as 3M 5200 FC P.U. Adhesive or FibreBond Tape, both supplied by us, and mechanical fixings.

Please note:-

- SlipGrip® Sprint cannot be fixed by mechanical fixing.
- FibreBond Tape Primer should be used with FibreBond Tape when affixing to unsealed, porous concrete, brick, stone, blockwork and surfaces prone to dust.



Bonding

FibreGrid recommends the use of FibreBond Tape or 3M 5200 FC P.U. Adhesive and Primer for SlipGrip® Sprint sheets. FibreBond Tape is suitable for bonding to concrete, wood, metal and steel in conjunction with FibreGrid Tape Primer for unsealed, porous concrete, brick, stone, blockwork etc. 3M 5200 FC P.U. adhesive is also a sealant and can be used to seal around the edges and stop water lying between the sheet or stair cover and the substrate. Water will not affect the sheets or stair covers but can affect the substrate such as wood or metal causing rot or rust. 3M 5200 FC P.U. Adhesive also offers a secondary fixing in the unlikely event that a mechanical fixing fails.

- Run a bead of adhesive around the perimeter of the sheet or stair tread approximately 25mm in from the edges and then cross hatch at about 200mm apart.
- Apply sufficient hand pressure to bed the sheet or stair cover into position.
- With 3M 5200 FC P.U. Adhesive, optimum bonding will be obtained after 24 hours (at 20°C). However, stairs can be made available to traffic a few hours after bonding, but this is subject to temperature so it is worth testing first.

Adhesive Coverage

As an approximate guide, with a 3mm bead, 1 x 295ml tube of 3M 5200 FC P.U. Adhesive should be sufficient to bond 37 linear metres of bead, or one 3m length of stair tread.



Mechanical fixing

SlipGrip® anti slip sheets and stair treads can be drilled and secured with stainless steel screws. It is recommended to use the Stair Tread Fixing Kit available from FibreGrid. Follow the preparation procedure prior to fixing:

1. Always ensure that the screw length is slightly longer than the plug length to obtain a good fixing if not using the FibreGrid Stair Tread Fixing Kit.
2. Use Mastix Adhesive on the underside to prevent the GRP drumming and rocking on the substrate.
3. Fixing is generally recommended at approximately: 70mm from the front, 50mm from each side, 60mm from the back, at a maximum of 250mm apart.

4. If fitting to a metal substrate, use self-tapping screws. There is no need to counter sink the screw holes since the screw can be tightened so that it beds into the gritted surface, making it flush with the wearing surface.

Predrilling

Stair tread covers and sheets can also be predrilled. Just call 01440 712722 and advise the technical sales representative with the measurements.

The above installation instructions are to be used as a guide. Always employ safe practices. It is recommended to first test the suitability of any fixing method on a small area before carrying out a full installation programme.



FibreGrid Installation Service

If you have a job that is too big to manage on your own, FibreGrid offers an installation service. Our team of fully qualified installers manage a range of installations; from our standard product range right through to bespoke, made to order GRP installations nationwide. Just call 01440 712722 and arrange for a member of our team

to visit your site. They will conduct an anti slip survey, providing you with a Risk Assessment and Method Statement, along with a quote.



Unit 2, Civic Industrial Estate, Homefield Road Central, Haverhill, Suffolk, CB9 8QP

Online: www.fibregrid.com

Email: sales@fibregrid.com

Phone: 01440 712722

Fax: 01440 712733



FIBREGRID