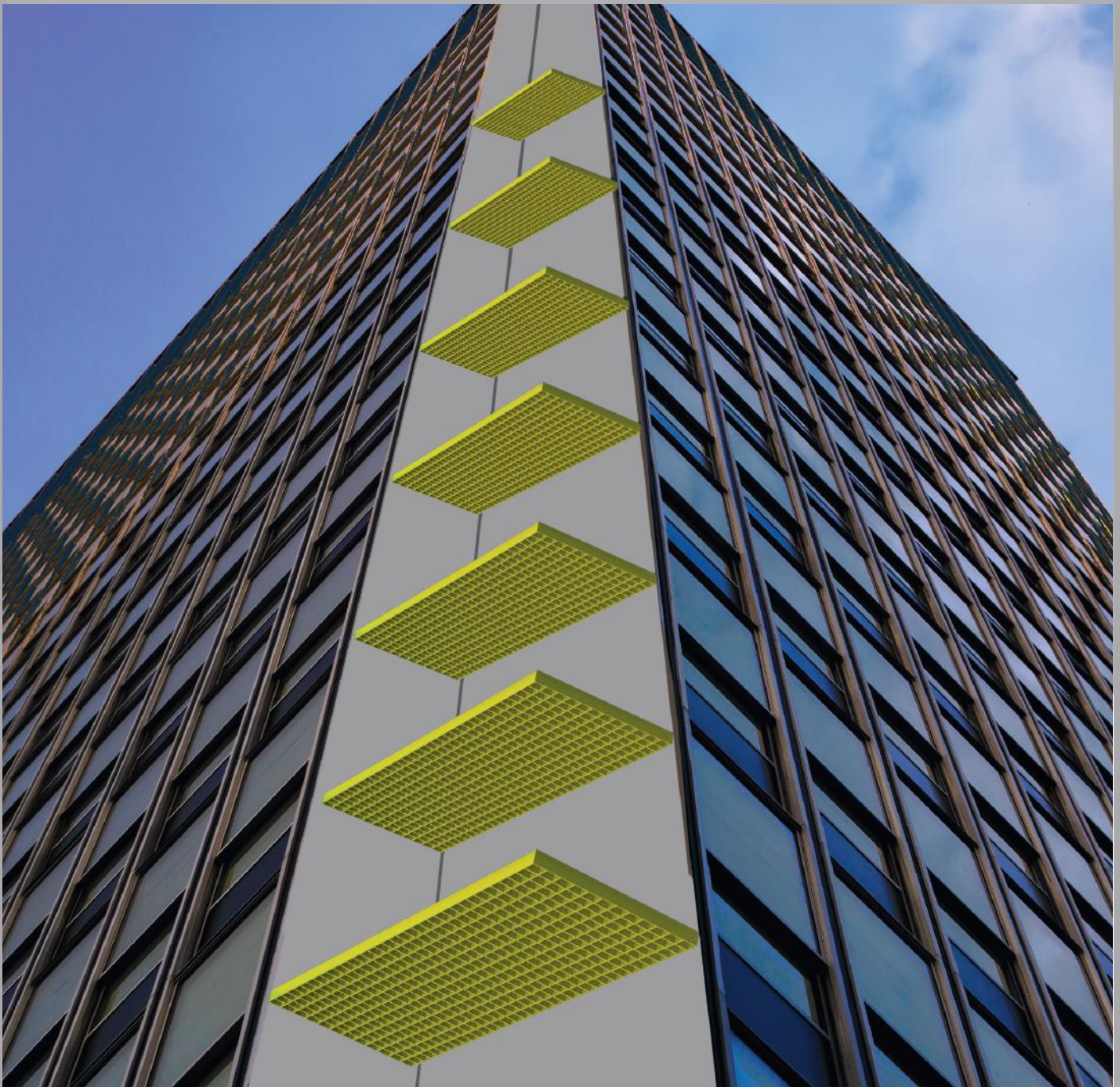




# FIBREGRID

## GRP Service Riser Grating & Support System



Southern Office: Unit 2, Civic Industrial Estate, Homefield Road Central, Haverhill, Suffolk, CB9 8QP  
Northern Office: Kingston House, 3 Walton Road, Pattinson North, Washington, Tyne & Wear, NE38 8QA

Online: [www.fibregrid.com](http://www.fibregrid.com)  
Email: [sales@fibregrid.com](mailto:sales@fibregrid.com)  
Phone: 01440 712722  
Fax: 01440 712733



# FIBREGRID





# FIBREGRID



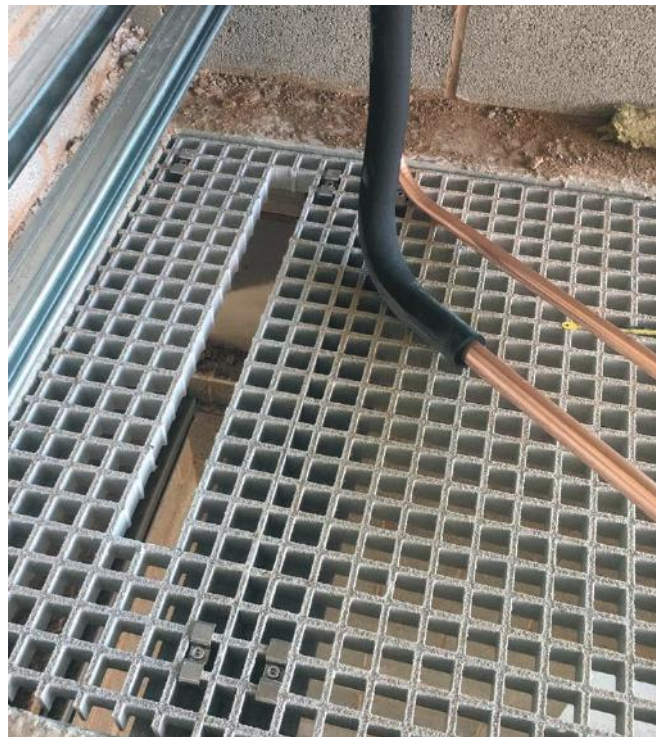
**FibreGrid's proficient design and fabrication team have over 50 years of collective experience in GRP Risers; making us the go to company for your Riser System needs.**

Whether it's a new build or the refurbishment of an existing building, our team of professionals will design, fabricate and install your new GRP Riser System exactly to your specifications.

All products are constructed from GRP (glass reinforced plastic), a much stronger, lighter and cost effective material than traditional construction materials.

Various panel sizes and support beams ensure that almost any riser opening requirements can be met.

Our GRP Riser System is expertly constructed to allow for easy fabrication either on site prior to installation, or at our factory if required. If fabricating on site, our GRP Grating can be easily cut using standard cutting tools, and no hot works are required. Our system can either be cast into concrete, or retro fitted to riser voids at a later date. Closing off a void mitigates any risk of fall from height.



**Southern Office: Unit 2, Civic Industrial Estate, Homefield Road Central, Haverhill, Suffolk, CB9 8QP**  
**Northern Office: Kingston House, 3 Walton Road, Pattinson North, Washington, Tyne & Wear, NE38 8QA**

**Online:** [www.fibregrid.com](http://www.fibregrid.com)  
**Email:** [sales@fibregrid.com](mailto:sales@fibregrid.com)  
**Phone:** 01440 712722  
**Fax:** 01440 712733



001



# FIBREGRID



# FIBREGRID



## Benefits of FibreGrid's GRP Service Riser Systems

- **Excellent Strength to Weight Ratio**

Less than half the weight of steel and able to hold impressive loads (load table available on request)

- **Long Maintenance-Free Service Life**

No painting, scraping or sandblasting required, drastically cutting life cycle costs

- **Fire Retardant**

Our grating has met the Class 2 flame spread rating - conducted to BS476: Part 7 that covers fire tests on building materials and structures

- **Unrivalled Impact Resistance**

Can endure major impact with little structural damage

- **Detailed Design**

Detailed design available to accommodate current and future service locations

- **Insurances**

Backed by a multi-national organisation, FibreGrid have all required insurances and liabilities

- **Flexible Installation**

Installation available as either cast in or post fixed.

- **Non sparking**

The GRP grating and structural supports do not require a hot works permit to cut

- **Non Conductive**

No threat of thermal or electrical conductivity

- **Chemical & Corrosion Resistance**

Can withstand extreme corrosive conditions, maintaining structural integrity in harsh environments

**Southern Office:** Unit 2, Civic Industrial Estate, Homefield Road Central, Haverhill, Suffolk, CB9 8QP

**Northern Office:** Kingston House, 3 Walton Road, Pattinson North, Washington, Tyne & Wear, NE38 8QA

**Online:** [www.fibregrid.com](http://www.fibregrid.com)

**Email:** [sales@fibregrid.com](mailto:sales@fibregrid.com)

**Phone:** 01440 712722

**Fax:** 01440 712733



001



# FIBREGRID





# FIBREGRID

## System Options



Open Mesh Grating  
38mm / 50mm

Covered Grating  
28mm / 41mm / 54mm



Steel and GRP Cleats available for fixing  
beams to the riser perimeter.

GRP I Beam Supports  
152 x 76 / 152 x 152 / 203 x 203

Perimeter Angle  
50mm / 75mm / 100mm

\* n.b. Other supports available to suit design

**Southern Office:** Unit 2, Civic Industrial Estate, Homefield Road Central, Haverhill, Suffolk, CB9 8QP  
**Northern Office:** Kingston House, 3 Walton Road, Pattinson North, Washington, Tyne & Wear, NE38 8QA

**Online:** [www.fibregrid.com](http://www.fibregrid.com)  
**Email:** [sales@fibregrid.com](mailto:sales@fibregrid.com)  
**Phone:** 01440 712722  
**Fax:** 01440 712733



# FIBREGRID



# FIBREGRID

## Grating Fixings

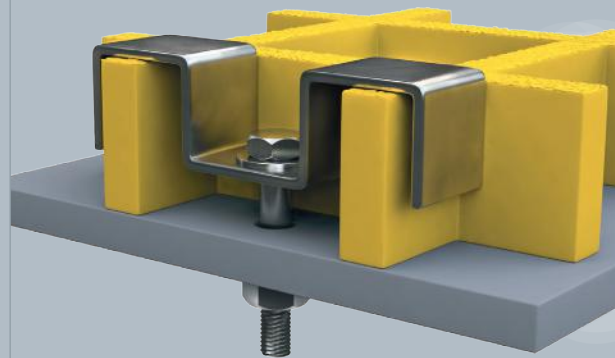
### WLP Washer Fixing

For fixing through solid top grating or plate directly into the support below (drilling required) (available for all grating types)



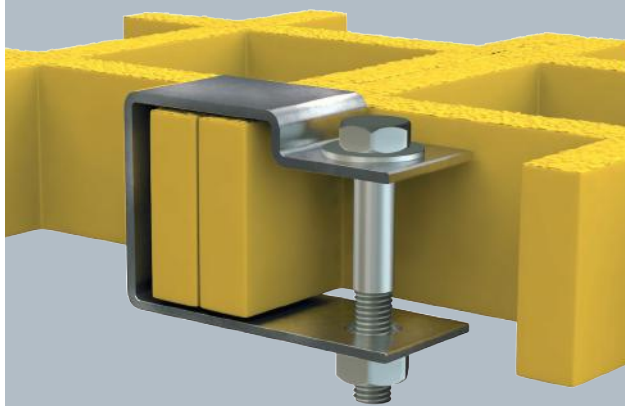
### M Hold Down Clip/ Saddle Clip

For bolting grating through supports beneath (drilling of support required) (available for all grating types)



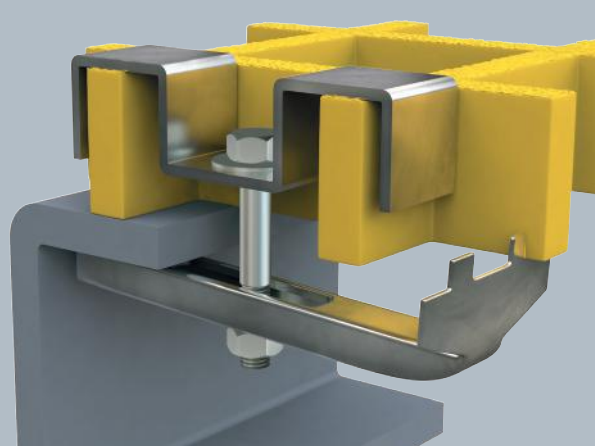
### Panel Joining Clip

For joining solid edges of panels together (available for most grating types)



### Fixing Clamp Complete

For clamping grating to supports beneath (no drilling required) (available for all grating types)



Southern Office: Unit 2, Civic Industrial Estate, Homefield Road Central, Haverhill, Suffolk, CB9 8QP  
Northern Office: Kingston House, 3 Walton Road, Pattinson North, Washington, Tyne & Wear, NE38 8QA

Online: [www.fibregrid.com](http://www.fibregrid.com)  
Email: [sales@fibregrid.com](mailto:sales@fibregrid.com)  
Phone: 01440 712722  
Fax: 01440 712733



001

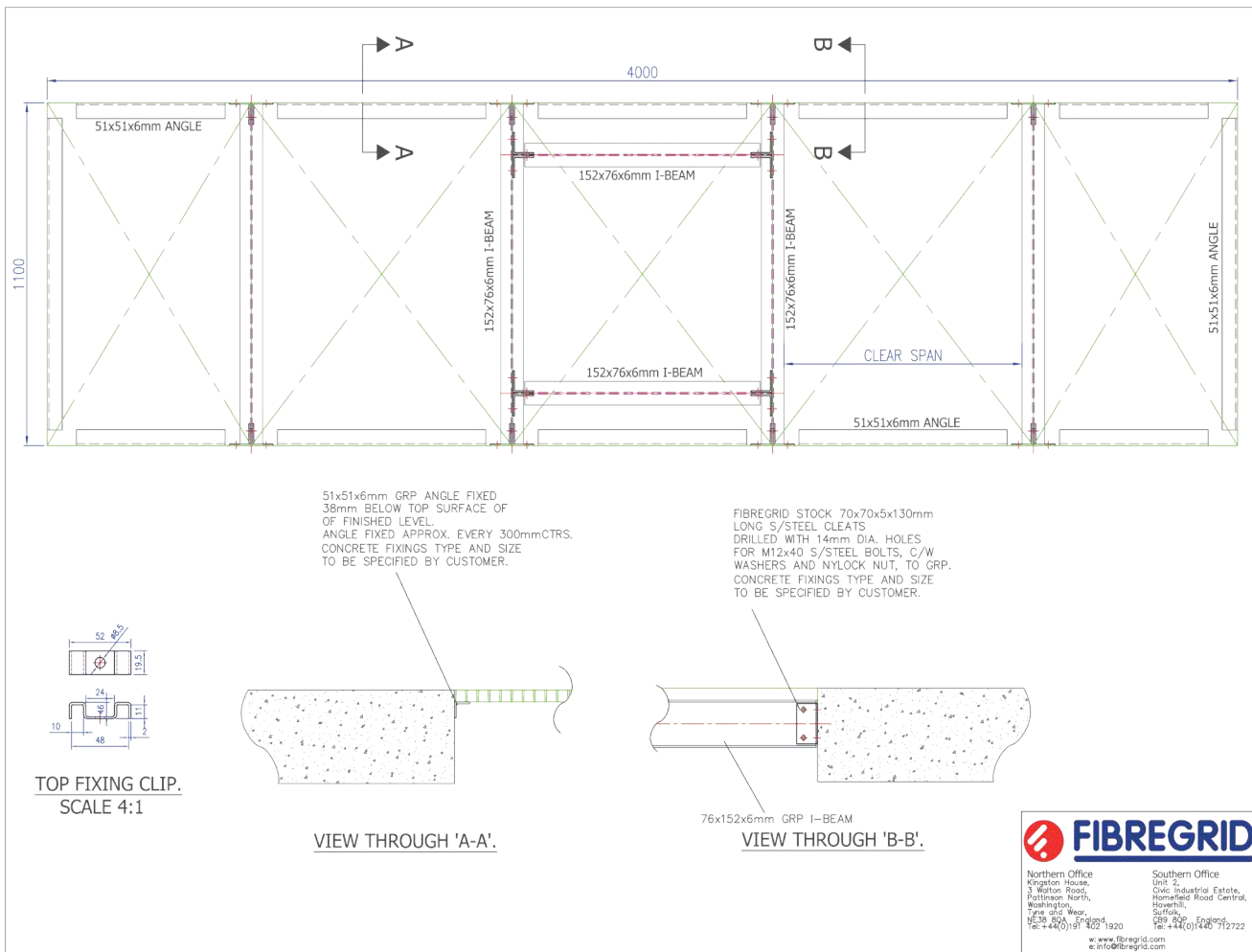


# FIBREGRID



# FIBREGRID

## Detailed Riser Design



FibreGrid offer a full detailed design service to allow for support of grating to accommodate service penetrations at a later date. This can be designed in conjunction with the relevant M&E contractors to aid installation and minimise future required alterations. All drawings can be provided in 2D CAD format.

**Southern Office:** Unit 2, Civic Industrial Estate, Homefield Road Central, Haverhill, Suffolk, CB9 8QP  
**Northern Office:** Kingston House, 3 Walton Road, Pattinson North, Washington, Tyne & Wear, NE38 8QA

**Online:** [www.fibregrid.com](http://www.fibregrid.com)  
**Email:** [sales@fibregrid.com](mailto:sales@fibregrid.com)  
**Phone:** 01440 712722  
**Fax:** 01440 712733



001



# FIBREGRID

## Fabrication, Delivery and Installation

### Fabrication

All materials fabricated to suit individual requirement. All items can be marked up as required by the client for ease of identification on site.



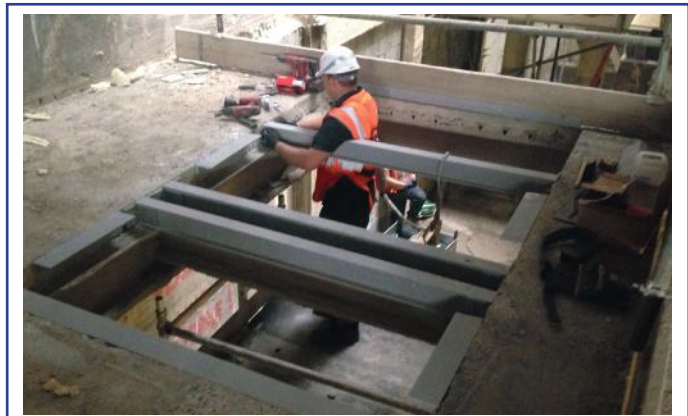
### Delivery

A range of delivery options available to suit site specific requirements including FORS Bronze and Silver. Material can be palletized as required even floor by floor to aid with identification.



### Installation

Fully qualified installation team with many years experience and a range of site specific accreditations.



**Southern Office:** Unit 2, Civic Industrial Estate, Homefield Road Central, Haverhill, Suffolk, CB9 8QP  
**Northern Office:** Kingston House, 3 Walton Road, Pattinson North, Washington, Tyne & Wear, NE38 8QA

**Online:** [www.fibregrid.com](http://www.fibregrid.com)  
**Email:** [sales@fibregrid.com](mailto:sales@fibregrid.com)  
**Phone:** 01440 712722  
**Fax:** 01440 712733



001





## Installation Instructions

### Riser Supports:

1. Typically, GRP equal angle supports are fitted to the riser perimeter using heavy duty concrete anchors.
2. For larger risers, or where there are to be large service cut-outs, additional structural supports such as GRP I Beams are used.
3. These are fixed to the perimeter wall using either GRP or steel cleats depending on the requirement. These cleats are then fixed to the wall using the same heavy duty concrete anchors.
4. Generally, riser supports are installed from below using a mobile scaffold tower. All GRP support fixing is done from the tower.

### Gratings:

1. The fabrication of grating to riser sizes can be done by ourselves or on site by our installation team, or others using standard cutting tools.
2. The grating is then laid over the GRP Riser supports and made secure using our stainless steel saddle clips and bolts.
3. The grating is then safe to walk on or use as the base for working from off the scaffold tower for the next floor.



Southern Office: Unit 2, Civic Industrial Estate, Homefield Road Central, Haverhill, Suffolk, CB9 8QP  
Northern Office: Kingston House, 3 Walton Road, Pattinson North, Washington, Tyne & Wear, NE38 8QA

Online: [www.fibregrid.com](http://www.fibregrid.com)  
Email: [sales@fibregrid.com](mailto:sales@fibregrid.com)  
Phone: 01440 712722  
Fax: 01440 712733



001







## Installation & Accreditations

### Cutting Penetrations For Services

- Service penetrations can be made either during the main installation or at a later date when the services are being installed.
- No hot work permits are required for this process.
- Penetrations can be made using standard cutting tools.
- Additional supports can be installed during this process if required.



### FibreGrid Accreditations



Please contact us if you require certification documents.

**Southern Office:** Unit 2, Civic Industrial Estate, Homefield Road Central, Haverhill, Suffolk, CB9 8QP  
**Northern Office:** Kingston House, 3 Walton Road, Pattinson North, Washington, Tyne & Wear, NE38 8QA

**Online:** [www.fibregrid.com](http://www.fibregrid.com)  
**Email:** [sales@fibregrid.com](mailto:sales@fibregrid.com)  
**Phone:** 01440 712722  
**Fax:** 01440 712733





# FIBREGRID



## About FibreGrid

Established in 2001, FibreGrid are a global supplier of GRP (glass reinforced plastic) anti slip grating, composite structures, flooring, stair tread covers and decking.

We are the experts in the design, supply, fabrication and installation of GRP flooring and composites, offering a fully comprehensive, turnkey solution for businesses across the world. With over 50 years of experience within our highly skilled and experienced team, we have an unrivalled amount of product knowledge and expertise, making us the market leaders in GRP flooring and anti slip products.

If required, we can provide documentation and certificates regarding our products and test results/reports, including:

- COSHH data sheets
- Mechanical and safety sheets
- Load tables
- PTV Pendulum Test results (potential slip factor)
- Chemical resistance tables
- Flame resistance certifications

---

**Southern Office:** Unit 2, Civic Industrial Estate, Homefield Road Central, Haverhill, Suffolk, CB9 8QP  
**Northern Office:** Kingston House, 3 Walton Road, Pattinson North, Washington, Tyne & Wear, NE38 8QA

**Online:** [www.fibregrid.com](http://www.fibregrid.com)  
**Email:** [sales@fibregrid.com](mailto:sales@fibregrid.com)  
**Phone:** 01440 712722  
**Fax:** 01440 712733



# FIBREGRID





# FIBREGRID

## The Experts in GRP Gratings and Access Solutions

### GRP Solid Top Trench Covers

Solid Top GRP Grating is a lightweight, chemical resistant, heavy duty GRP Grating, suitable for areas where a fully covered surface is required. Ideal for walkways, gullies, trenches and railway crossing points.



### GRP Access Platforms

FibreGrid's pre-engineered composite platforms serve as a cost-effective alternative to more costly traditional materials such as steel. Ideal for bund wall stepovers, staircases, access platforms and high level walkways.



### FibreRail GRP Handrail

FibreRail GRP Handrail System is ideal for industrial sized GRP structures. It is expertly engineered to use the fewest number of handrail components available; facilitating an easier, faster installation.



### GRP Access Ladders

FibreGrid's GRP Access Ladders are all manufactured to meet each client's specific requirements. Designed in accordance with BS5385 part 3. Available with either a safety cage or fall arrest system.



### GRP Stair Tread Covers

FibreGrid's SlipGrip® GRP stair tread covers are the most durable solution to slippery steps. With a DDA compliant 55mm nosing and chemical resistant surface, they offer the ultimate in step safety.



### EdgeGrip® GRP Stair Nosings

GRP Stair Nosings provide incredible durability and slip resistance, and comply with the Disability Discrimination Act due to their 55mm high contrast nosing.



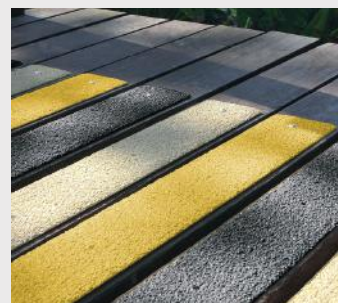
### GRP Anti Slip Flat Sheets

Whether you need to cover a large expanse, or a small potentially hazardous area; our GRP flat sheets' tough, chemical resistant surface makes them the ideal solution to slippery floors and walkways.



### GRP Anti Slip Decking Strips

GRP Decking Strips are a quick and simple solution to slippery decking. The strips can be installed over virtually any decking boards, providing excellent slip resistance whilst maintaining the original aesthetic.



**Southern Office:** Unit 2, Civic Industrial Estate, Homefield Road Central, Haverhill, Suffolk, CB9 8QP  
**Northern Office:** Kingston House, 3 Walton Road, Pattinson North, Washington, Tyne & Wear, NE38 8QA

**Online:** [www.fibregrid.com](http://www.fibregrid.com)  
**Email:** [sales@fibregrid.com](mailto:sales@fibregrid.com)  
**Phone:** 01440 712722  
**Fax:** 01440 712733



001



# FIBREGRID





# FIBREGRID

## GRP Service Riser Grating & Support System



Southern Office: Unit 2, Civic Industrial Estate, Homefield Road Central, Haverhill, Suffolk, CB9 8QP  
Northern Office: Kingston House, 3 Walton Road, Pattinson North, Washington, Tyne & Wear, NE38 8QA

Online: [www.fibregrid.com](http://www.fibregrid.com)  
Email: [sales@fibregrid.com](mailto:sales@fibregrid.com)  
Phone: 01440 712722  
Fax: 01440 712733



001



# FIBREGRID