



We are
Power



We are
Utilities



DESIGN

SUPPLY

FABRICATE

INSTALL

FibreGrid in the Power Industry

FibreGrid have been providing solutions to the power and utilities industry for over 20 years, with products such as open mesh and solid top trench covers, vehicle traffic trench covers, bund flooring, bund access solutions and switchroom flooring.

Along with supplying the best quality products, FibreGrid ensure the best possible service to our customers. We offer a full turnkey service - from face to face design meetings, site survey visits, access to our fabrication and installation teams as well as a highly experienced technical account manager.

Testing

Our products have been fully tested to meet the following standards:

- **EN124**
- **A15**
- **B125**
- **C250**

Test reports available on request.



FibreCOVER

Trench Covers

Open Mesh & Solid Top Pedestrian Trench Covers & Vehicle Traffic Trench Covers

FibreGrid offer National Grid Approved Open Mesh & Solid Top Trench Covers for pedestrian and vehicle load trenching applications. They are lightweight, corrosion resistant and easy to fabricate to size meaning they are the preferred choice to more traditional concrete covers. Our range of covers are tested to meet A15, B125 & C250 load ratings.



FibreGRATING

GRP Grating

FibreGrid GRP Grating is designed to provide the ultimate in reliable performance even in the most demanding conditions. This advanced grating system is a cost effective alternative to traditional materials, including steel, where corrosion resistance and long maintenance free life is required.

Slip Resistant - our open mesh flooring comes with a slip resistant top surface as standard and easily exceeds the minimum requirements of the 'extremely low' potential for slip rating demanded by the UK Slip Resistant Group Guide of 2002.

Impact Resistant - bump into steel grating with a forklift, for example, and it will buckle. GRP grating has high energy absorption and can be repeatedly knocked without causing permanent damage.

Lightweight - at only 12.3kg per square metre (25mm high) and 19.5kg per square metre (38mm high), you don't need any heavy lifting gear or specialist equipment. A two-person team can easily complete the job.

Fire Retardant - our grating has been tested in accordance with BS 476: Part 7 and also meets the requirements of Class 2 (certificates available on request). If you need a higher resistance and low smoke generation, then a phenolic resin is available. Unlike steel, there is no danger of sparking if metal objects are dropped on the grating.

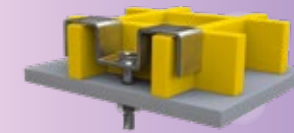
Corrosion Resistant - we offer a choice of chemical resistant resins and, what's more, our grating can be used in the toughest conditions, such as oil rigs, chemical plants and coastal applications to name but a few.



FibreGRATING

Grating Clips & Fixings

M-Clips, C-Clips, & L-Clips sets for installing GRP Grating. Grating clips are made from stainless steel 316, so will not rust over time. Clips are available in various sizes. Technical Data sheets are accessible for reference.



M-CLIP



L-CLIP



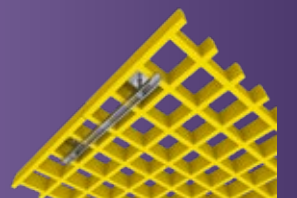
TWIN GRID (MINI MESH)
M CLIP



C-CLIP



J CLAMP



CHANNEL CLAMP



GRATING DISC



SQUARE RECESSED CLIP



DOMe FIXING (WLP)

FibreGRATING

Bund Flooring

Our National Grid Approved Bund Flooring provides the ideal solution for areas of pedestrian foot traffic where the flow of liquids needs to be drained away. Our GRP Grating is lightweight and easy to install, non-conductive and features an anti slip gritted surface for all levels of foot traffic.

nationalgrid



Switchroom Flooring

FibreGrid provide a switchroom flooring solution which is non conductive, lightweight and easy to install, with an anti slip top surface, providing a safe working environment for pedestrian access.



Access Solutions

FibreGrid Access Solutions include bund wall step overs and access platforms. They are lightweight and non-conductive, a preferred alternative to steel on many sites.



FibreFORM

GRP Handrail Systems

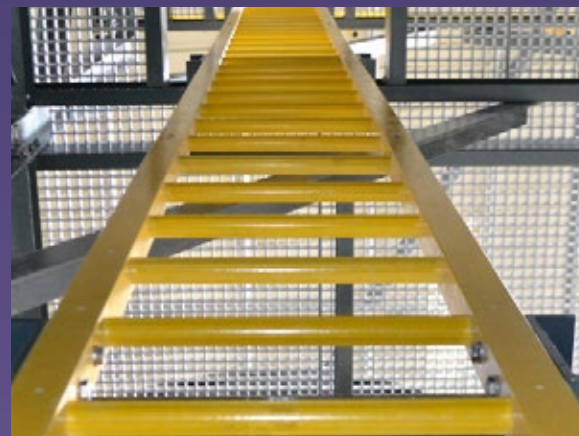
FibreRail GRP Handrail Systems is ideal for industrial sized GRP structures. It is expertly engineered to use the fewest number of handrail components available in facilitating an easier, faster installation.



FibreGRIP

GRP Access Ladders

FibreGrid's GRP Access Ladders are all manufactured to meet each client's specific requirements. Design in accordance with BS5385 Part 3. Available with either a safety cage or fall arrest system.



FibreGRIP

Anti Slip Ladder Rung Covers

FibreGrip Anti Slip Ladder Rung Covers improve ladder safety with their anti slip surface and chemical resistance.



SLIPGrip®

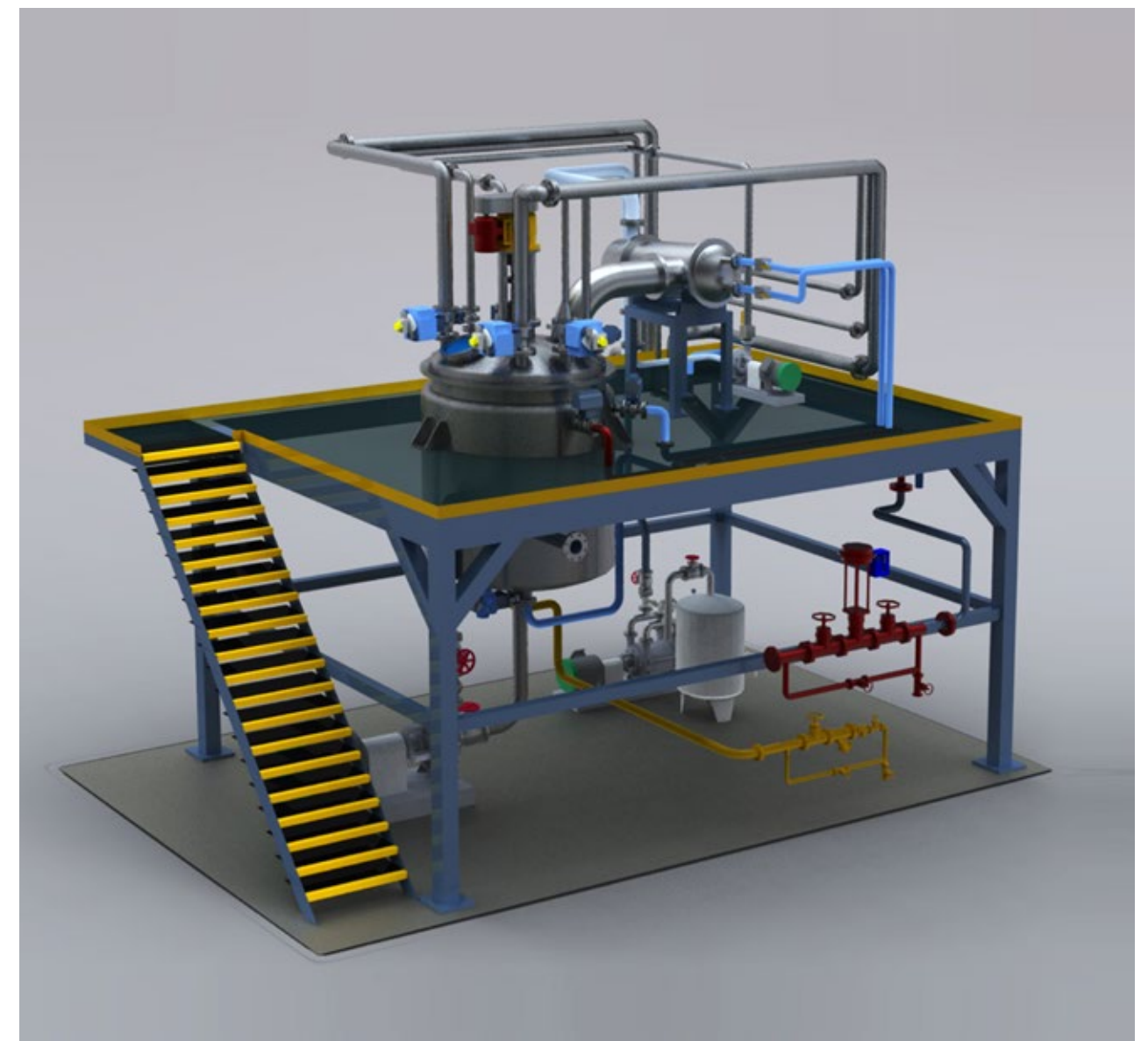
GRP Stair Tread Covers

FibreGrid's SlipGrip GRP Stair Tread Covers are the most durable solution to slippery steps. With a DDA compliant 55mm nosing, and chemical resistant surface, they offer the ultimate in step safety.

EDGEgrip®

GRP Stair Nosings

FibreGrid's GRP Stair Nosings make an excellent, more cost effective and subtle alternative to our GRP Stair Tread Covers. They provide excellent durability and slip resistance as well as complying with DDA regulations.



SLIPGrip®

GRP Anti Slip Flat Sheets

Whether you need to cover a large expanse, or a small potentially hazardous area, our GRP flat sheets' tough, chemical resistant surface makes them the ideal solution to slippery floors and walkways.



DECKGrip®

GRP Anti Slip Decking Strips

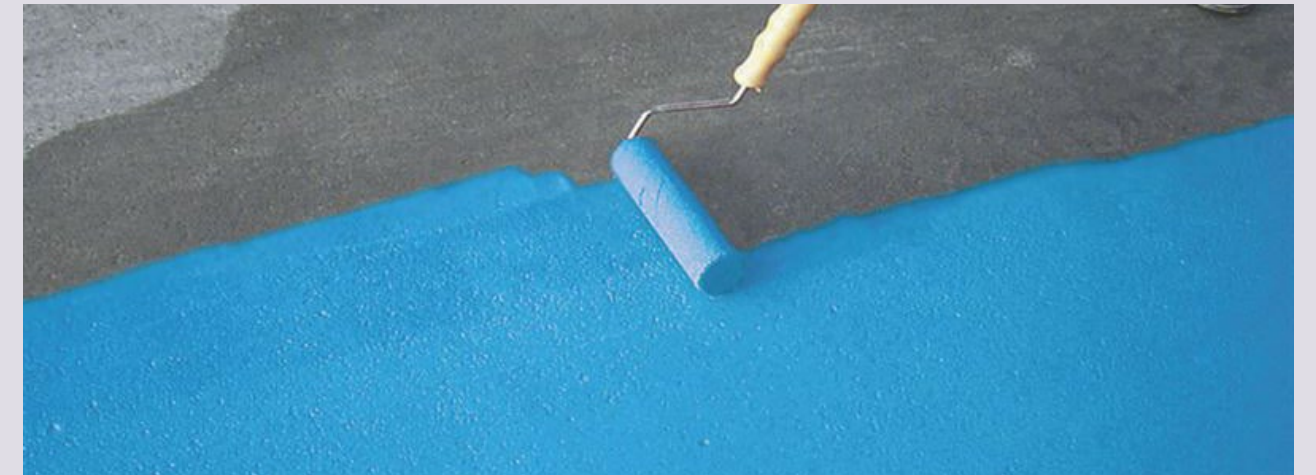
GRP Decking Strips are a quick and simple solution to slippery decking. The strips can be installed over virtually any decking boards, providing excellent slip resistance whilst maintaining the original aesthetic.



SLIPGrip®

Anti Slip Paints

FibreGrid produce a wide variety of anti slip paint coatings, from an extremely durable two-pack epoxy resin for floors that suffer through heavy vehicle traffic, to the SlipGrip® Step & Ramp paint, which is so powerful it is recommended for maritime use.



SLIPGrip®

Anti Slip Tapes

FibreGrid's Anti Slip Tapes are our most cost effective solution to slippery surfaces. Ideal for areas of minimal foot traffic, they are extremely easy and quick to install onto any substrate.



nationalgrid

Fibregrid have been an approved supplier of GRP Pedestrian and Vehicle Load Trench Covers for a number of years



FibreCOVER

We have installed our Embedded Grit Top Grating for Anglian Water. The extremely durable slip resistant panels are contrasted using high grade chemical resistant isophthalic polyester resin and our ExtremeCore™ grit embedded into the top of the grating to provide a long lasting anti slip surface. Our GRP grating has a high energy absorption and can be repeatedly knocked without causing permanent damage, unlike steel which will buckle under impact (by a bump from a forklift for example).



love every drop
anglianwater



FibreGRATING

Other Utility Clients include:



MORRISON
Utility Services

JM Johnson Matthey
Inspiring science, enhancing life



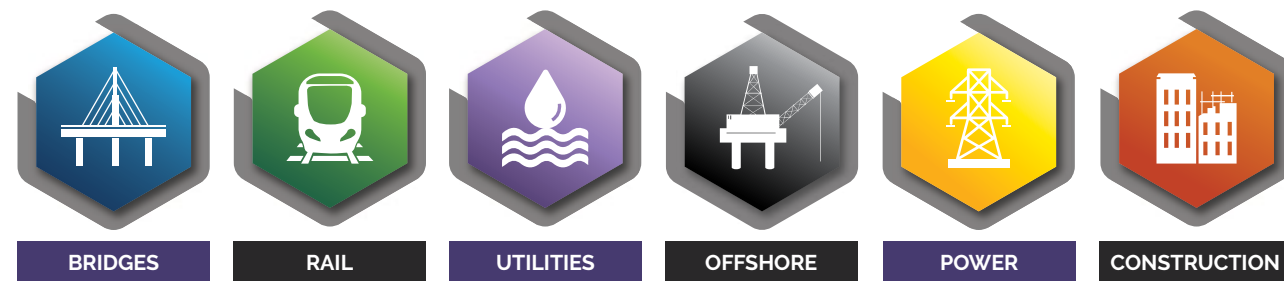


About

USL Speciality Products

USL Speciality Products manufacture and supply specialist construction products to support, preserve and enhance critical Infrastructure assets, specifically in the Bridge, Rail, Utilities, Offshore, Power and General Construction market spaces.

Our products are supplied to fully trained specialist contractors who deliver complex infrastructure projects to strict quality, budget and time constraints.



Our Product Categories

- Structural Waterproofing
- Mechanical Expansion Joints
- Structural Bearings
- Bridge Deck Drainage
- Line Markings
- Concrete Repairs
- GRP Grating, Access Platforms and fencing
- Surface Mounted Tactile Paving
- Resin Injection
- Ironwork Reinstatement Products
- Pipe Rehabilitation

Our Brands

Trusted to Deliver Excellence





Northern Office:
Kingston House,
3 Walton Road,
Pattinson North,
Washington,
Tyne & Wear,
NE38 8QA



Southern Office:
Unit 2, Civic Industrial Estate,
Homefield Road Central,
Haverhill,
Suffolk,
CB9 8QP



www.fibregrid.com



sales@fibregrid.com



01440 712722

A  **SPECIALITY
PRODUCTS** Company