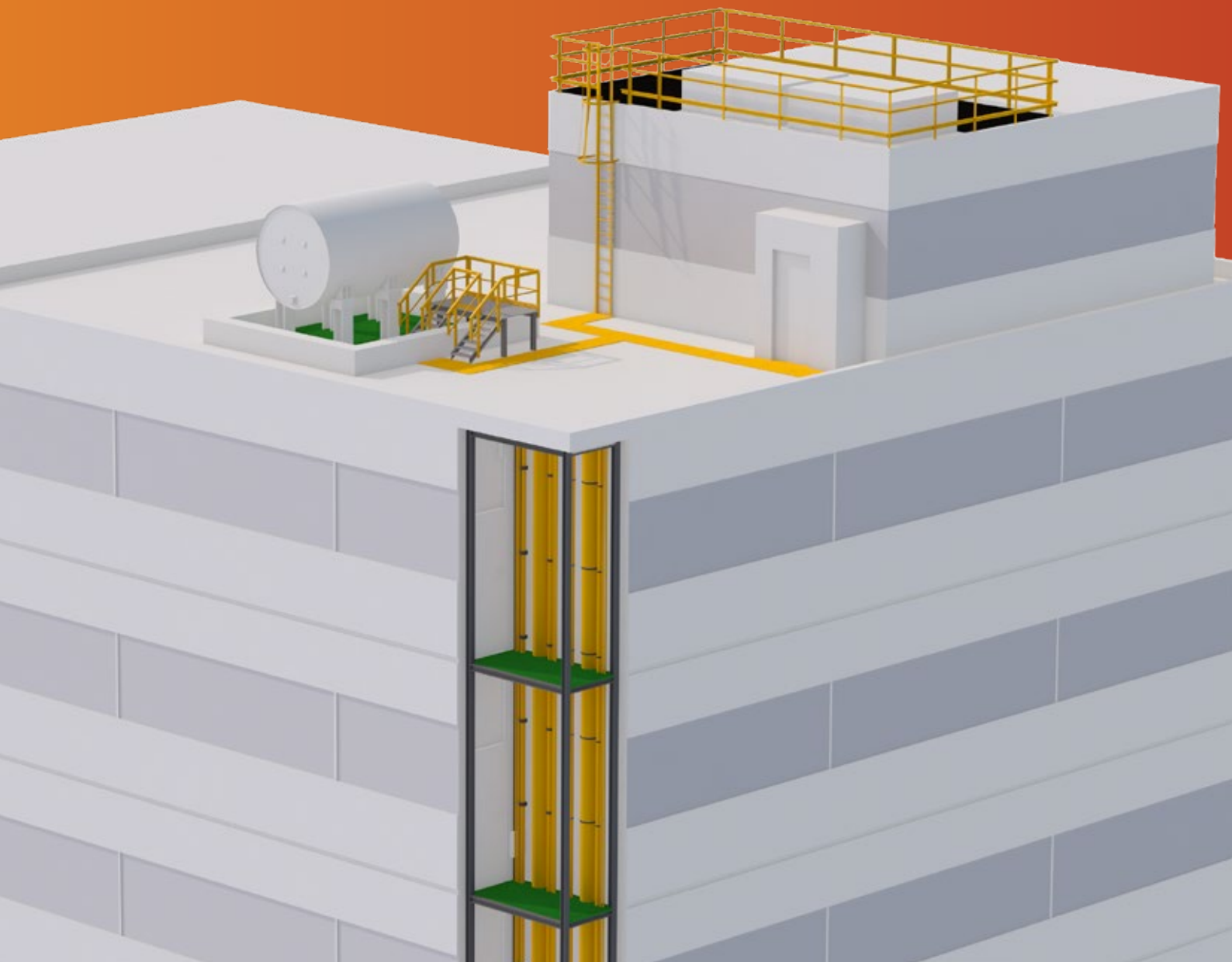




We are  
Construction



DESIGN

SUPPLY

FABRICATE

INSTALL



## FibreGrid in Construction

The construction industry has one of the highest rates of workplace injury. That's why we at FibreGrid are focused on the safety of construction workers, and the prevention of possible slips, trips and falls.

One of our most popular products to be used in construction, is our Service Risers. These are often used to provide a safe working environment during construction, refurbishment or demolition. Poorly protected holes and gaps in flooring are a major health and safety issue because of the threat of workers, or even building materials and debris falling through. Established in 2001, FibreGrid are a global supplier of GRP (glass reinforced plastic) anti slip grating, composite structures, flooring, stair tread covers and decking.

We are the experts in the design, supply, fabrication and installation of GRP flooring and composites, offering a fully comprehensive, turnkey solution for businesses across the world. With over 50 years of experience within our highly skilled and experienced team, we have an unrivalled amount of product knowledge and expertise, making us the market leaders in GRP flooring and anti slip products.

Areas of use:

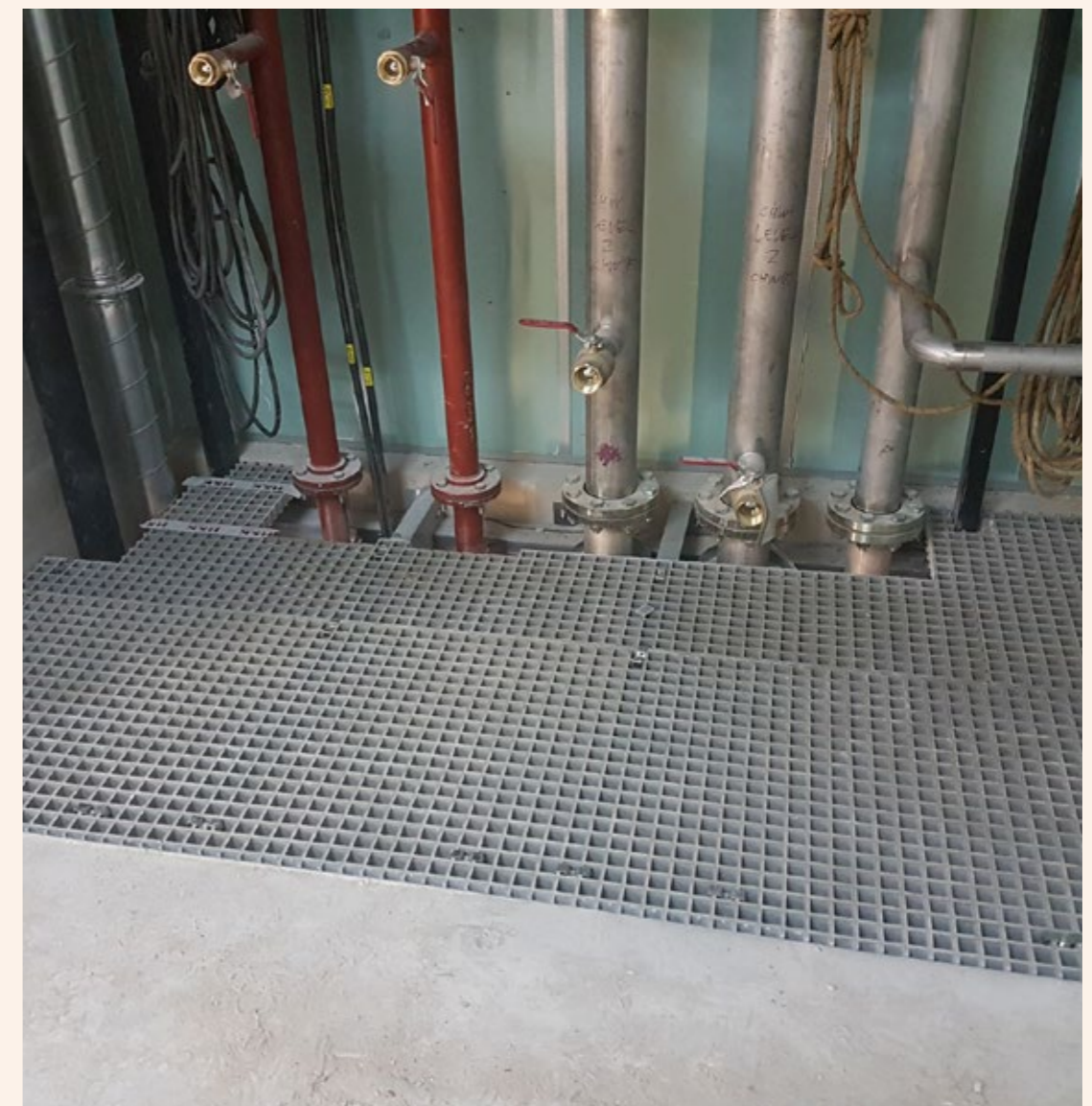
- **Buildings & Homes**
- **Stadiums**
- **Schools & Universities**
- **Manufacturing & Warehouses**
- **Automotive**
- **Marinas**
- **Washbays**



## FibreRISE

### GRP Service Risers

Various panel sizes and support beams ensure that almost any riser opening requirements can be met. Our GRP Riser System is expertly constructed to allow for easy fabrication either on site prior to installation, or at our factory if required. If fabricating on site, our GRP Grating can be easily cut using standard cutting tools, and no hot works are required. Our system can either be cast into concrete, or retro fitted to riser voids at a later date. Closing off a void mitigates any risk of fall from height.



# FibreCOVER

## Trench Covers

Open Mesh & Solid Top Pedestrian Trench Covers & Vehicle Traffic Trench Covers

FibreGrid offer National Grid Approved Open Mesh & Solid Top Trench Covers for pedestrian and vehicle load trenching applications. They are lightweight, corrosion resistant and easy to fabricate to size meaning they are the preferred choice to more traditional concrete covers. Our range of covers are tested to meet A15, B125 & C250 load ratings.



## Switchroom Flooring

FibreGrid provide a switchroom flooring solution which is non conductive, lightweight and easy to install, with an anti slip top surface, providing a safe working environment for pedestrian access.



# FibreGRATING

## GRP Grating

FibreGrid GRP Grating is designed to provide the ultimate in reliable performance even in the most demanding conditions. This advanced grating system is a cost effective alternative to traditional materials, including steel, where corrosion resistance and long maintenance free life is required.

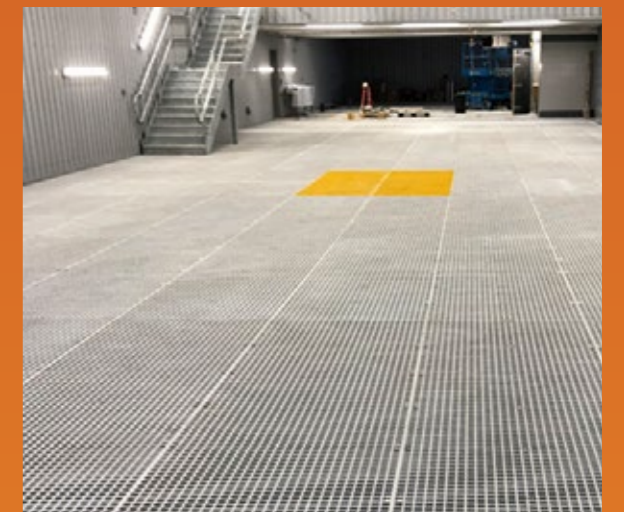
Slip Resistant - our open mesh flooring comes with a slip resistant top surface as standard and easily exceeds the minimum requirements of the 'extremely low' potential for slip rating demanded by the UK Slip Resistant Group Guide of 2002.

Impact Resistant - bump into steel grating with a forklift, for example, and it will buckle. GRP grating has high energy absorption and can be repeatedly knocked without causing permanent damage.

Lightweight - at only 12.3kg per square metre (25mm high) and 19.5kg per square metre (38mm high), you don't need any heavy lifting gear or specialist equipment. A two-person team can easily complete the job.

Fire Retardant - our grating has been tested in accordance with BS 476: Part 7 and also meets the requirements of Class 2 (certificates available on request). If you need a higher resistance and low smoke generation, then a phenolic resin is available. Unlike steel, there is no danger of sparking if metal objects are dropped on the grating.



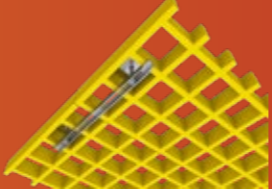


Corrosion Resistant - we offer a choice of chemical resistant resins and, what's more, our grating can be used in the toughest conditions, such as oil rigs, chemical plants and coastal applications to name but a few.



# FibreGRATING

## Grating Clips & Fixings

M-Clips, C-Clips, & L-Clips sets for installing GRP Grating. Grating clips are made from stainless steel 316, so will not rust over time. Clips are available in various sizes. Technical Data sheets are accessible for reference.

		
M-CLIP	L-CLIP	TWIN GRID (MINI MESH) M CLIP
		
C-CLIP	J CLAMP	CHANNEL CLAMP
		
GRATING DISC	SQUARE RECESSED CLIP	DOME FIXING (WLP)

# DECKGrip®

## Anti Slip Decking Strips

Our Anti Slip GRP Decking Strips come in two options, either standard or heavy duty, and are suitable for areas of medium to heavy traffic, such as office premises, school and university grounds, and home and garden decking.



# DECKGrip®

## GRP Anti Slip Decking Strips

GRP Decking Strips are a quick and simple solution to slippery decking. The strips can be installed over virtually any decking boards, providing excellent slip resistance whilst maintaining the original aesthetic.



# SLIPGrip®

## Anti Slip Deck Coating for Wooden Decking

SlipGrip Anti Slip Deck Coating for wooden decking is an easy-to-apply anti slip coating that can be applied to stained or unstained decks and other wooden substrates to combat slippery decking. Apply with a 12" Roller and 5" Paint Brush.



# SLIPGrip®

## GRP Stair Tread Covers

FibreGrid's SlipGrip GRP Stair Tread Covers are the most durable solution to slippery steps. With a DDA compliant 55mm nosing, and chemical resistant surface, they offer the ultimate in step safety.



# EDGEgrip®

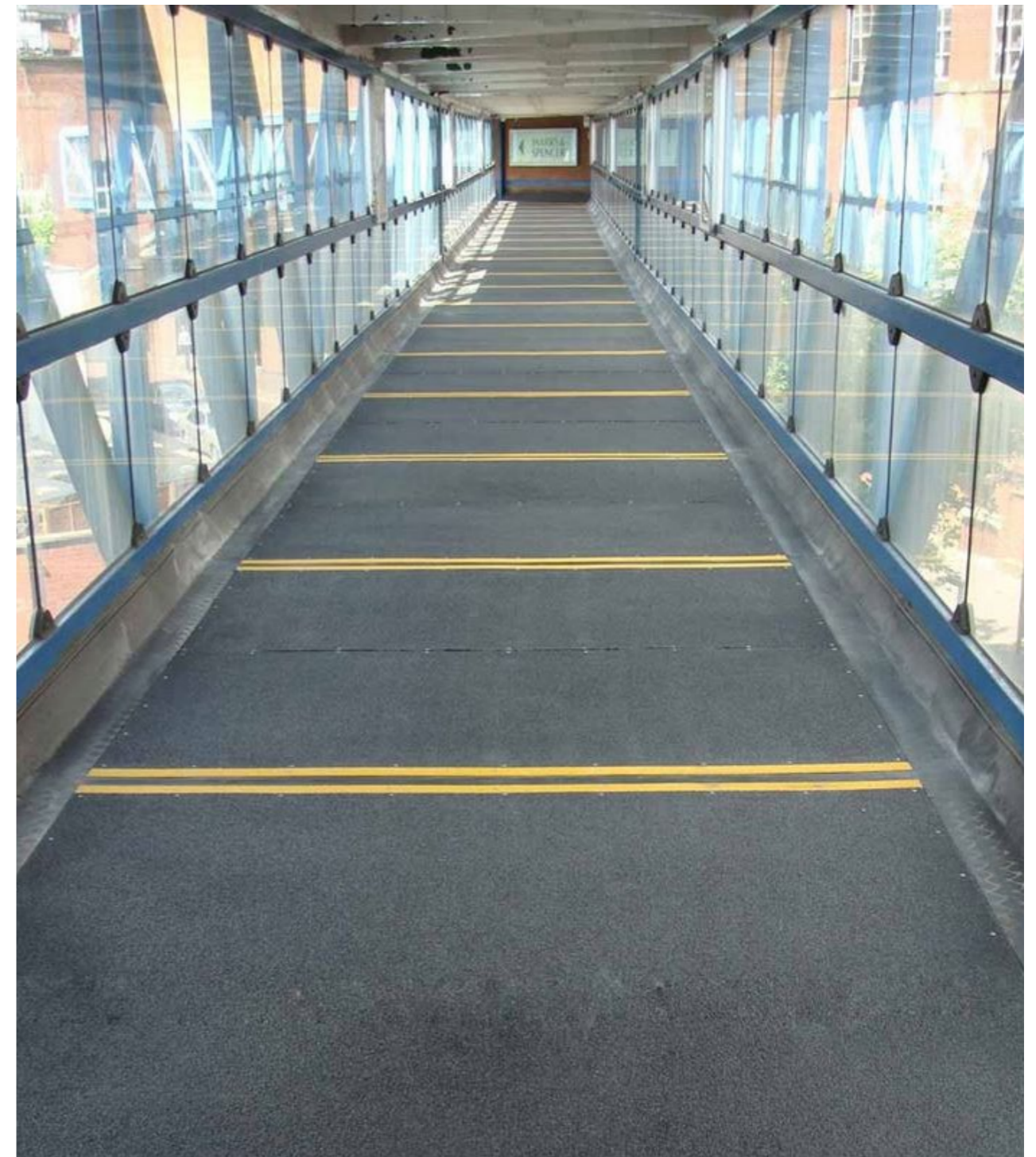
## GRP Stair Nosings

FibreGrid's GRP Stair Nosings make an excellent, more cost effective and subtle alternative to our GRP Stair Tread Covers. They provide excellent durability and slip resistance as well as complying with DDA regulations.

# SLIPGrip®

## GRP Anti Slip Flat Sheets

Whether you need to cover a large expanse, or a small potentially hazardous area; our GRP flat sheets' tough, chemical resistant surface makes them the ideal solution to slippery floors and walkways.



# FibreFORM

## PVC Handrails

The FibreForm PVC handrail system is ideal for a variety of applications. Constructed from steel core with PVC coating, the product is a breakthrough for handrail systems. All connections fit flush, resulting in a pleasing, streamlined appearance. The internal connections allow the construction of continuous handrail systems without raised external fittings. FibreForm Handrail System has been designed specifically to meet DDA obligations, Part M of the Building Regulations.



# FibreFORM

## GRP Modular Handrail

FibreGrid's GRP Modular Handrail System is ideal for industrial sized GRP structures. It is expertly engineered to use the fewest number of handrail components available in facilitating an easier, faster installation.

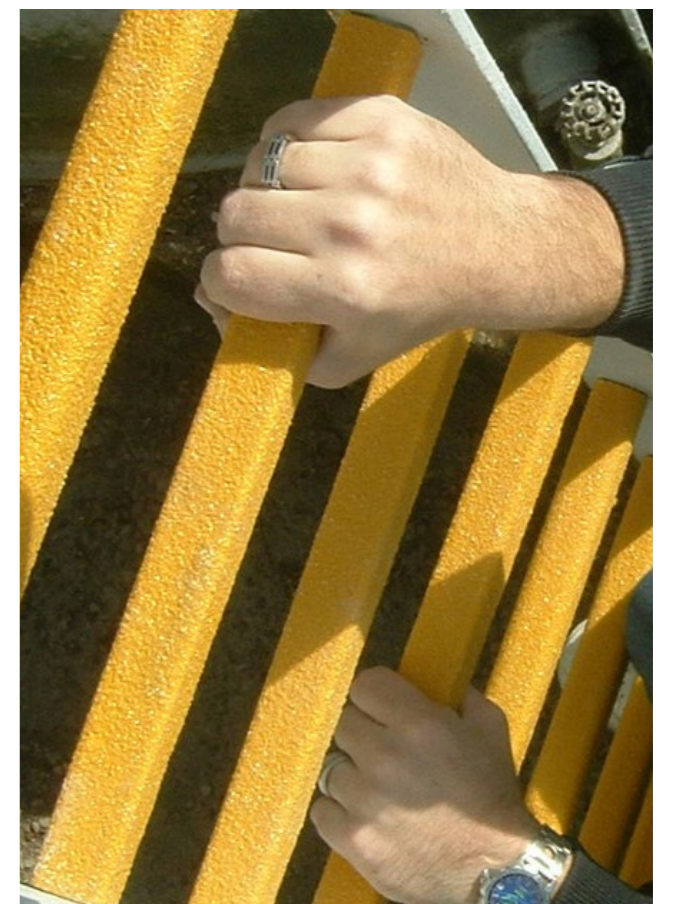


# FibreGRIP

## Anti Slip Ladder Rung Covers

FibreGrip Anti Slip Ladder Rung Covers improve ladder safety with their anti slip surface and chemical resistance. FibreGrip is the ideal solution for new or existing ladders. Replacing old ladders due to potential slip hazards is an option but can be very costly. With FibreGrip, there is no need to replace any part of the ladder, it simply fits over the existing rungs and is securely bonded in place.

FibreGrip is a pre-formed fibreglass profile that has a bonded carbon grit surface, providing the ultimate slip resistance in whatever conditions. The fact that the contact point for the foot is completely square and not rounded means that it also provides much surer footing. FibreGrip comes in any colour, however, yellow is the stock colour.

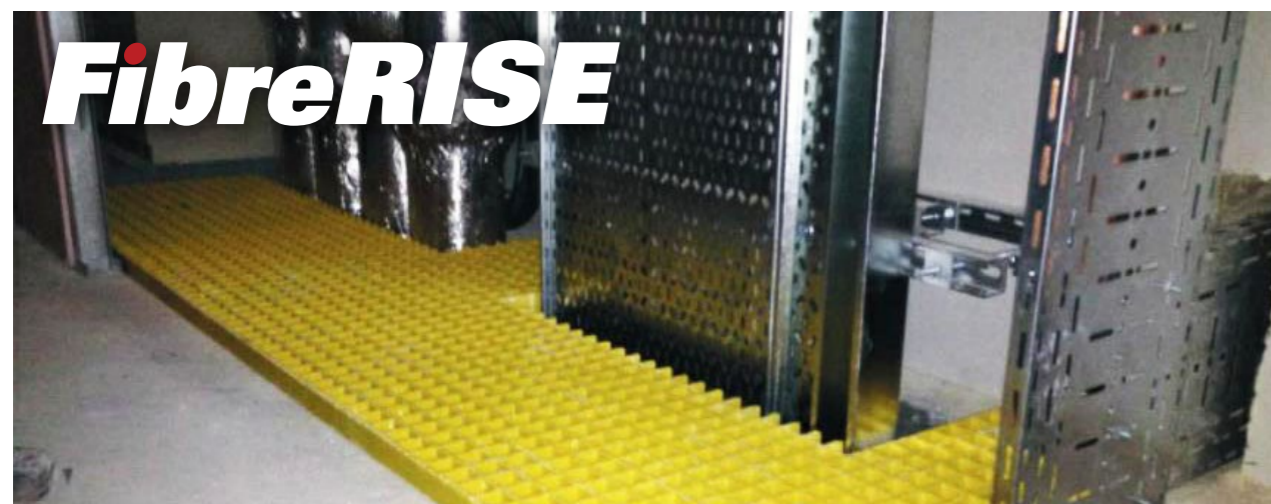


We are the experts in the design, supply, fabrication and installation of GRP flooring and composites, offering a fully comprehensive, turnkey solution for businesses across the world. With over 50 years of experience within our highly skilled and experienced team, we have an unrivalled amount of product knowledge and expertise, making us the market leaders in GRP flooring and anti slip products.



Service risers, also known as decking risers, or shaft risers are often used to provide a safe working environment, during construction, refurbishment or demolition. Our GRP Heavy Duty Embedded Grit Top Grating is a cost effective, anti slip alternative to traditional steel grating and it was successfully installed by Como, a Mace contractor, for one of their high rise building projects.

Poorly protected holes are a major health and safety issue, with the danger of people working on the site falling through, but also the threat of building materials or debris dropping through as well. Therefore designers and specifiers have a responsibility under CDM regulations to ensure all voids are protected and maintained to the highest possible standard. GRP riser grating is the ideal solution for these voids and is often specified to provide a safe working environment in the fitting of lift equipment.



Our SlipGrip Riser Plates were installed at VINCI Construction UK Limited, Leeds. Our Riser Plates fit onto the vertical part of the step in order to ensure a fully anti slip solution to your slippery steps. The addition of Riser Plates means that not only is the whole tread covered but the riser is completely covered offering a visually enhanced appearance. Like our Stair Treads, the Riser Plates are made from fibreglass materials so will not rot, twist or warp.



Other Construction Clients include:





About

## USL Speciality Products

USL Speciality Products manufacture and supply specialist construction products to support, preserve and enhance critical Infrastructure assets, specifically in the Bridge, Rail, Utilities, Offshore, Power and General Construction market spaces.

Our products are supplied to fully trained specialist contractors who deliver complex infrastructure projects to strict quality, budget and time constraints.



## Our Product Categories

- Structural Waterproofing
- Mechanical Expansion Joints
- Structural Bearings
- Bridge Deck Drainage
- Line Markings
- Concrete Repairs
- GRP Grating, Access Platforms and fencing
- Surface Mounted Tactile Paving
- Resin Injection
- Ironwork Reinstatement Products
- Pipe Rehabilitation

## Our Brands

Trusted to Deliver Excellence





Northern Office:  
Kingston House,  
3 Walton Road,  
Pattinson North,  
Washington,  
Tyne & Wear,  
NE38 8QA



Southern Office:  
Unit 2, Civic Industrial Estate,  
Homefield Road Central,  
Haverhill,  
Suffolk,  
CB9 8QP



[www.fibregrid.com](http://www.fibregrid.com)



[sales@fibregrid.com](mailto:sales@fibregrid.com)



01440 712722

A  **SPECIALITY**  
**PRODUCTS** Company