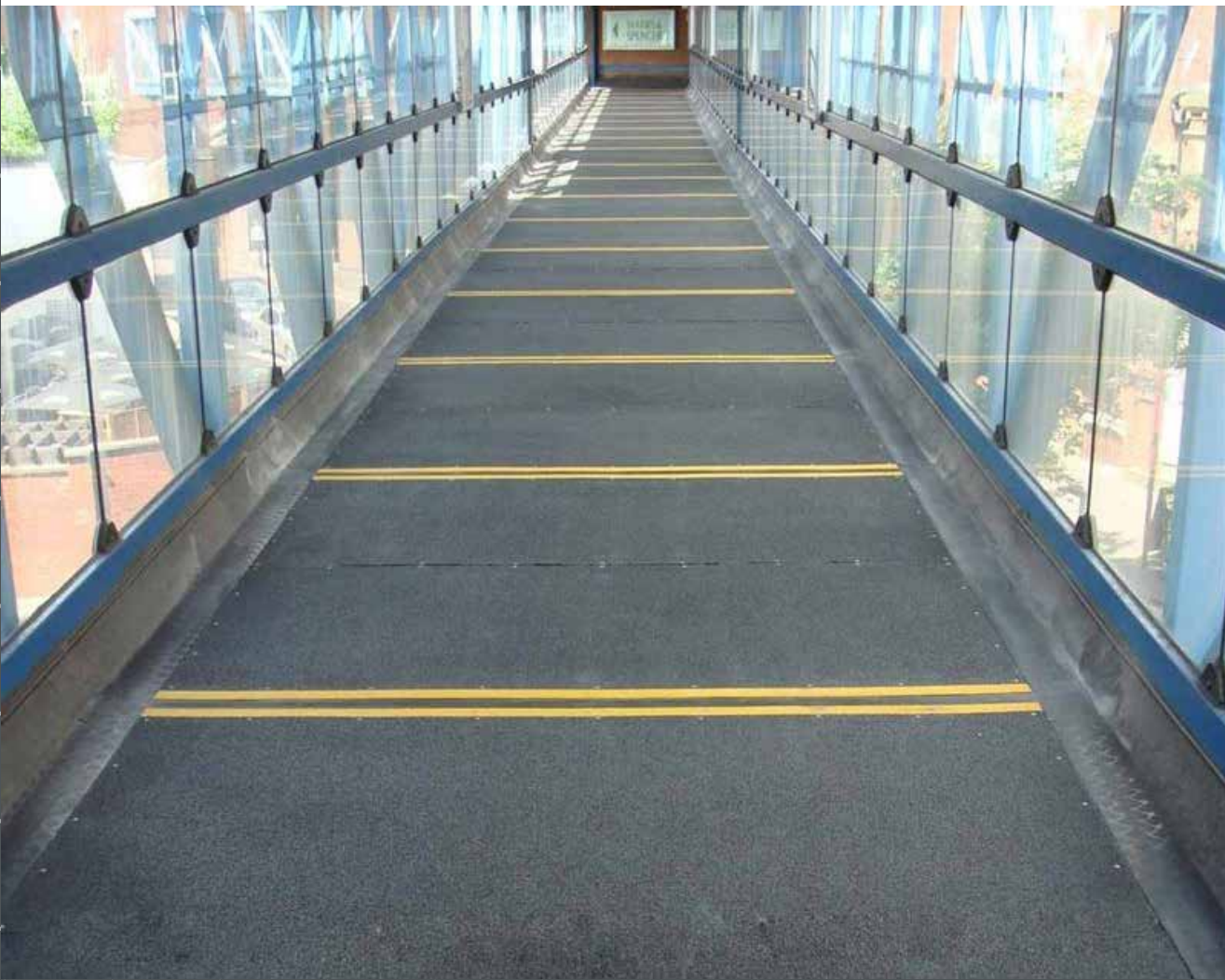


# ***SLIPGrip<sup>®</sup>***

Heavy Duty GRP Flat sheets



DESIGN

SUPPLY

FABRICATE

INSTALL



Our SlipGrip® Heavy Duty Anti Slip Sheets offer superior slip resistance for both interior and exterior use. They are made from durable and lightweight GRP and with our own superior grit, they are twice as hard wearing as the industry standard. They are also chemical resistant, providing the perfect solution for potentially hazardous areas. The low profile GRP construction is produced by the pultrusion method, which protects from bending, warping or splitting over time.

SlipGrip® Heavy Duty Flat Sheets comprise of a high quality composite of glass woven matting impregnated with isophthalic polyester resin.

## CHARACTERISTICS

- Slip resistant - our ExtremeCore® grit is added in the final layer of laminate providing an excellent slip resistant and hard wearing surface
- Highly durable anti slip flat sheet surface for heavy walkway use
- Cut to size up to 3m wide free of charge
- Large UK stocks with custom sizes available
- Simple to install - the flexibility of our flat sheets make installation easy with minimal downtime
- Lightweight

## SUITABLE APPLICATIONS

- ✓ Heavy traffic walkways
- ✓ Ramps
- ✓ Gangways
- ✓ Factory floors
- ✓ Marina walkways
- ✓ Entrance areas to retirement homes, schools and council buildings

## SUITABLE SUBSTRATES

- ✓ Wood
- ✓ Concrete
- ✓ Stone
- ✓ Metal

## TECHNICAL DATA

Standard sizes for sheets:	800mm x 1200mm 1200mm x 1200mm 2400mm x 1200mm
Tolerances (including cut):	+/- 3-4mm
Grade:	Sheets - Black, Grey. Yellow & Stone available in fine and coarse, all other colours fine only.
Thickness:	5-7mm with grit
Service temperature:	-20°C to 80°C
Fire retardant:	ASTM D 635

## SLIP RESISTANCE VALUES

Measured using the Pendulum test method (WF rubber slider) - certificate available on request.

Top Surface	Dry Reading	Wet Reading
Coarse Grit	<b>76</b>	<b>70</b>
Fine Grit	<b>71</b>	<b>63</b>

To ensure that the above slip resistance levels are maintained, the stair treads should be kept clean.

The UK Slip Resistance Group guide to slip resistance of a floor for able bodied pedestrians:

Four S Pendulum Value	Potential for Slip
Above 65	Extremely Low
35 - 65	Low
25 - 35	Moderate
25 & Below	High

## CLEANING GUIDE & TIPS

Use of a stiff brush will usually be sufficient when cleaning SlipGrip® GRP Flat Sheets to remove everyday dirt. For a more stubborn contamination, it is recommended that a mild detergent such as SlipGrip® Degreaser is used and then rinsed with cold water. It is important to remove any excess water from the Flat Sheets prior to being put back into use with suitable absorbent materials. Where circumstances allow, SlipGrip® GRP Flat Sheets can be power washed on a low setting.

The security of the fixings/adhesive should be checked on a regular basis. Circumstances will vary, based upon the volume of foot traffic etc, but, as a guide, monthly inspections would be advisable.

## HANDLING & STORAGE

Safe handling practices should always be employed and the appropriate Personal Protection Equipment is to be worn. Store the sheets flat and upside down.



## PERSONAL PROTECTION EQUIPMENT

It is recommended that the following Personal Protection Equipment is worn for installation of SlipGrip® GRP Flat Sheets and further protective measures may be necessary but this will depend on the installation environment:

Bonding	Cutting & Mechanical Fixing
<ul style="list-style-type: none"> <li>✓ Eye Goggles</li> <li>✓ Protective Gloves</li> <li>✓ Safety Boots</li> </ul>	<ul style="list-style-type: none"> <li>✓ Eye Goggles</li> <li>✓ Protective Gloves</li> <li>✓ Safety Boots</li> <li>✓ Ear Defenders</li> <li>✓ Dust mask (available from FibreGrid)</li> </ul>



## CUTTING

SlipGrip® Anti Slip Flat Sheets can be cut to size using orbital cutting equipment with a diamond blade. Cutting should be carried out externally or where there is dust extraction or suitable ventilation and the appropriate protective equipment as detailed above should be worn. A jigsaw can be used for trimming or for occasions where only a small amount of cutting is required.



### CUT TO SIZE SERVICE

FibreGrid offers a free cut to size service for all SlipGrip® products except SlipGrip® Precision. When you place your order, inform the technical advisor that you intend to install the product yourself and they will tailor the order to meet your requirements.

## PRE-DRILLING

SlipGrip® Anti Slip Flat Sheets can also be predrilled. Just call 01440 712722 and advise the technical sales representative with the measurements.

The above installation instructions are to be used as a guide. Always employ safe practices. It is recommended to first test the suitability of any fixing method on a small area before carrying out a full installation programme.

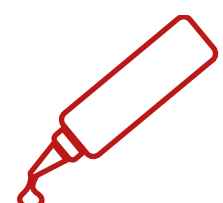
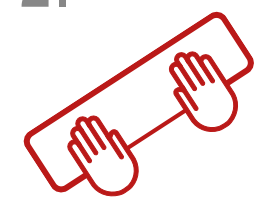
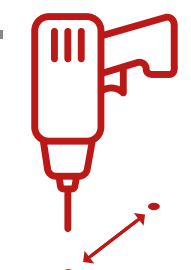
## PREPARATION

- ✓ Ensure that the area is clean, dry and free from loose and friable material. Any "dished" or damaged surface areas should be patch repaired to provide a reasonably flat and consistent surface.
- ✓ Dry fit all SlipGrip® panels to ensure they fit freely and that they sit flat down on the surface.
- ✓ If required, SlipGrip® GRP Flat Sheets can be trimmed on site to suit, ideally using a skill saw with a 4mm diamond blade or an angle grinder with a 1mm blade.
- ✓ Please ensure that goggles and gloves are worn at all times when any form of cutting is involved.



These installation instructions are to be used as a guide. Always employ safe practices. It is recommended to first test the suitability of any fixing method on a small area before carrying out a full installation programme.

## APPLICATION

<p>1.</p> 	<p>Apply an approx. 6mm bead (this may need to be increased dependant on the substrate conditions) of the high strength gap filling adhesive around the periphery of the underside of the SlipGrip® panels approx. 25mm in from the edges. Then, starting from the bottom left corner come up at an angle (approx. 200mm across) and then down at an angle, to create a 'peak and a trough', repeat this until you reach the end.</p>
<p>2.</p> 	<p>Immediately press the panel firmly to the substrate to ensure adequate transfer of adhesive (depending on the size of the bead, this will elevate the sheet by approximately 1-1.5mm). A firm bond will be achieved in about one hour under normal circumstances and conditions.</p>
<p>3.</p> 	<p>Drill holes 50mm in from all edges at no more than 300mm apart from the centres. Depending on the width of the panels it may be necessary to provide fixing points at 600mm centres down the middle of the panels. As substrates vary considerably, additional fixings may be required to fix the panels down. If fixing down two pieces of flat sheet that is constrained by sides (i.e. a ramp with wall on either side) a 5mm expansion gap should be considered between the two or more sheets. This gap can be filled with a standard high modulus mastic.</p>

## MECHANICAL FIXING

SlipGrip® Anti Slip Flat Sheets can be drilled and secured with stainless steel screws. It is recommended to use the Flooring Sheet Fixing Kit available from FibreGrid. Follow the preparation procedure prior to fixing:

1. Always ensure that the screw length is slightly longer than the plug length to obtain a good fixing if not using the FibreGrid Flooring Sheet Fixing Kit.
2. Use Mastic Adhesive on the underside to prevent the GRP drumming and rocking on the substrate.
3. Fixing is generally recommended at approximately: 70mm from the front, 50mm from each side, 60mm from the back, at a maximum of 250mm apart.
4. If fitting to a metal substrate, use self-tapping screws. There is no need to counter sink the screw holes since the screw can be tightened so that it beds into the gritted surface, making it flush with the wearing surface.



**Southern Office:**  
Unit 2, Civic Industrial Estate,  
Homefield Road Central,  
Haverhill,  
Suffolk,  
CB9 8QP



**Northern Office:**  
Kingston House,  
3 Walton Road,  
Pattinson North,  
Washington,  
Tyne & Wear,  
NE38 8QA



**[www.fibregrid.com](http://www.fibregrid.com)**



**Email: [sales@fibregrid.com](mailto:sales@fibregrid.com)**



**Phone: 01440 712722**



001