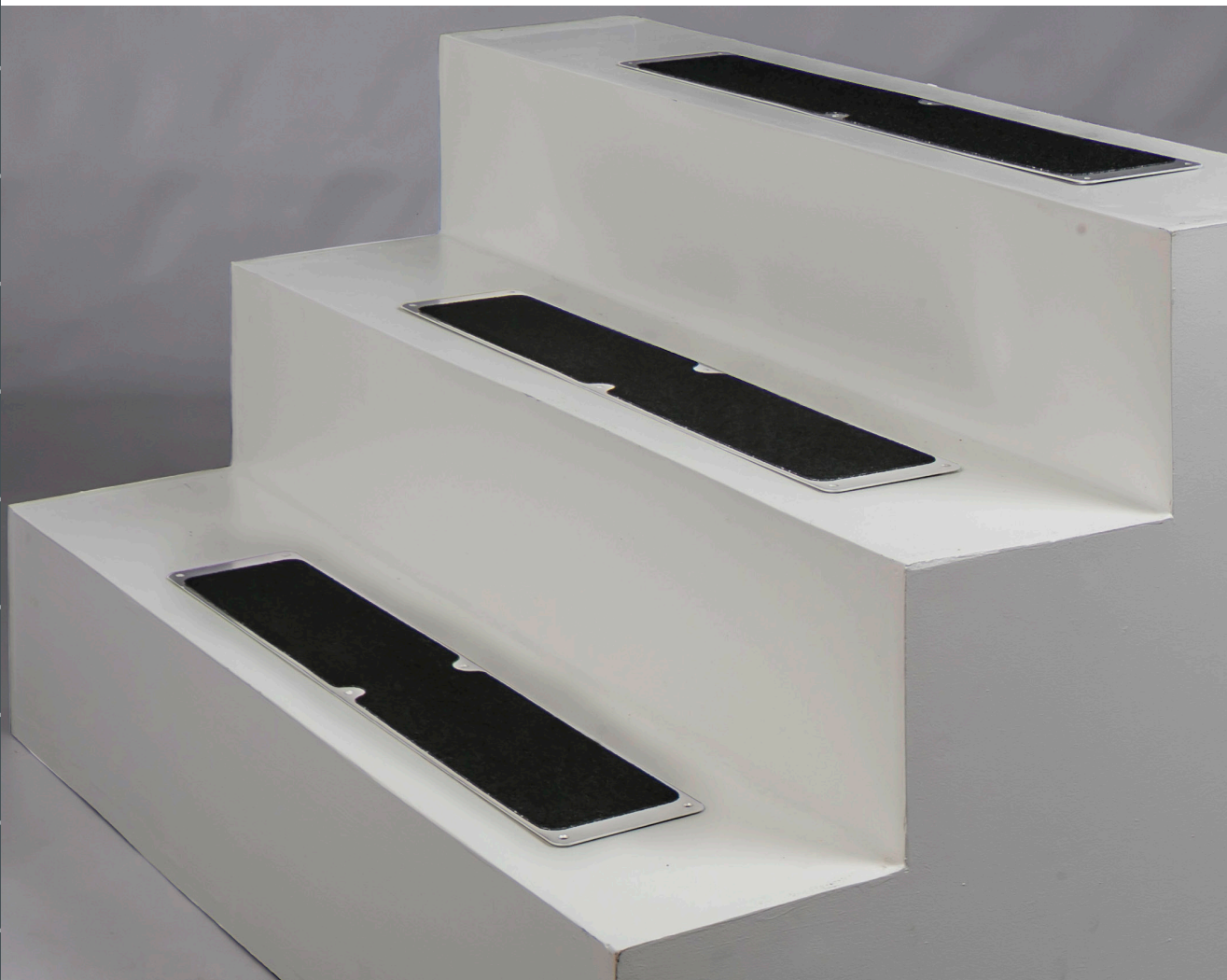


SLIPGrip[®]

Aluminium Screw Down Stair Plates



DESIGN

SUPPLY

FABRICATE

INSTALL



SlipGrip® Aluminium Screw Down Stair Plates are a subtle anti slip stair tread for environments where a 'less industrial looking' solution is required.

We provide 6 x hardened steel galvanised screws and 6 predrilled holes, so you can drill down and install quickly and easily.

CHARACTERISTICS

- Rapid installation - minimal downtime and can be walked on immediately
- Highly durable
- Subtle and aesthetically pleasing
- Anti slip - made from resin-bonded aluminium

SUITABLE SUBSTRATES

- ✓ Wood
- ✓ Concrete
- ✓ Metal
- ✓ Stone

TECHNICAL DATA

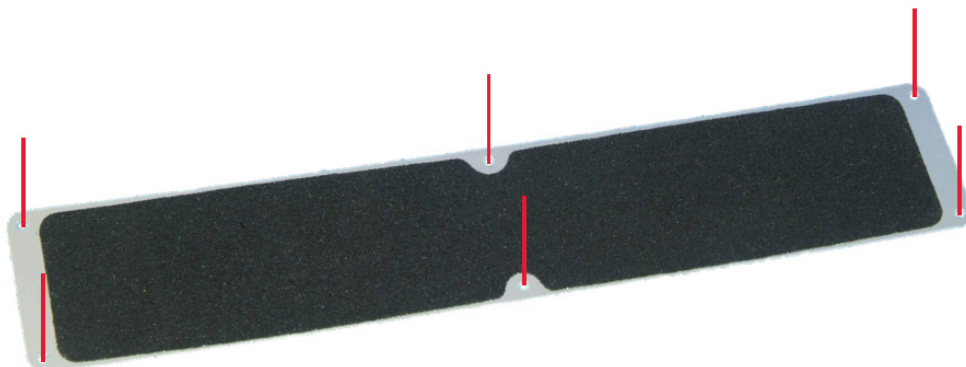
Colours:	Aluminium with black anti slip insert
Length:	635mm
Width:	115mm

PREPARATION

- ✓ Ensure that the area is clean, dry and free from loose and friable material.
- ✓ Any "dished" or damaged surface areas should be patch repaired to provide a reasonably flat and consistent surface. You can patch repair concrete with our SlipGrip® Step Edge Repair.
- ✓ Dry fit stair tread covers to ensure they fit freely and that they sit flat down on the surface.

INSTALLATION

Using the screws provided, simply drill down screws into each of the 6 pre-drilled holes.





Southern Office:
Unit 2, Civic Industrial Estate,
Homefield Road Central,
Haverhill,
Suffolk,
CB9 8QP



Northern Office:
Kingston House,
3 Walton Road,
Pattinson North,
Washington,
Tyne & Wear,
NE38 8QA



www.fibregrid.com



Email: sales@fibregrid.com



Phone: 01440 712722



001